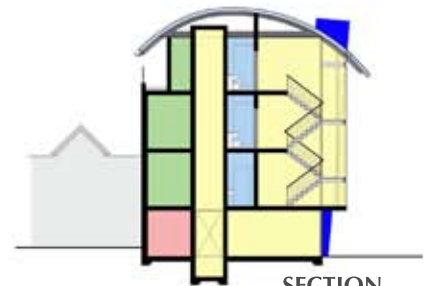


This design is for a modern four-storey commercial development which was requested by the client as an alternative to a residential scheme on the same site. At present the site accommodates four somewhat delapidated garages, a condition of the design was to reinstate these garages and maintain existing rights of way to the residents behind. The top three floors consist of open plan office accommodation, as a result the glazing to the rear is kept to a minimum so as not to encroach on the residents space.

On each side of the new building are two very different buildings, the Victorian Apartments to the east provide the scale to which this design relates and whilst the new scheme is dramatically more modern it provides some link on the street front between the Victorian building and the post-war boys club to the west.



EAST ELEVATION



SECTION



STREET SCENE



GROUND FLOOR



FIRST FLOOR



SECOND FLOOR

