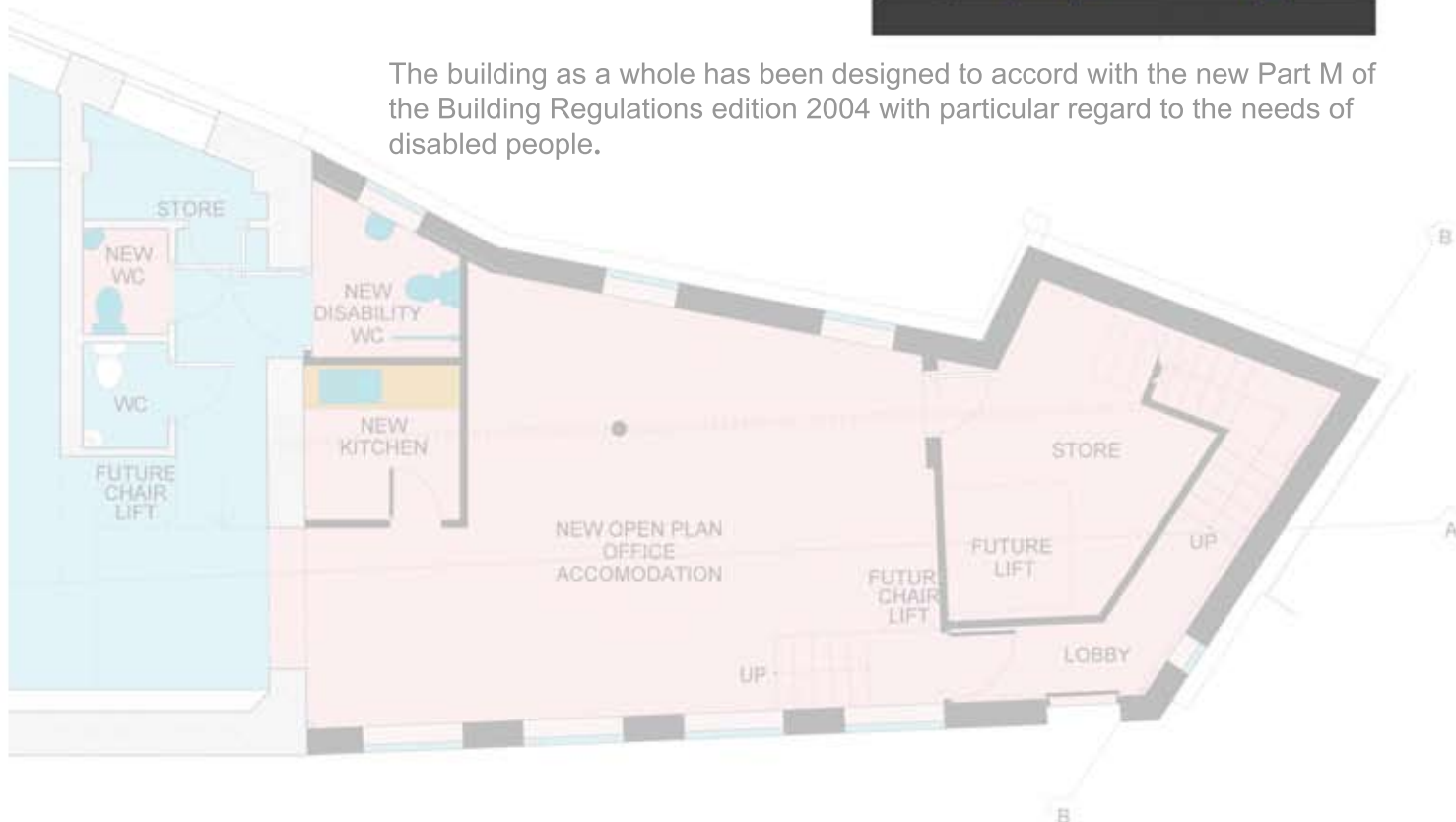
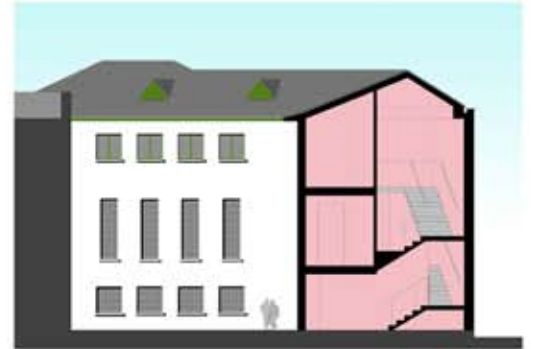


The brief required that the design of the office extension should maximise the potential of the very tight site to the rear of the existing office building which was the only location for such a development. It was important that the maximisation of the floor space did not make the extension overpowering on its surrounding and that the roof height should not exceed that of the existing building.



The building as a whole has been designed to accord with the new Part M of the Building Regulations edition 2004 with particular regard to the needs of disabled people.